



PILBARA

COLLECTION VOLUME 2



“IT’S GOTTA BE RITEMATE”

PILBARA COLLECTION® EST: 2006

Ritemate Australia - Pilbara Collection is an innovative brand that is rapidly expanding on the Australian market.

Having a major involvement in the Australian Textile & Clothing industry over the last thirty years, the executives of Ritemate Australia - Pilbara Collection bring a wealth of experience and knowledge to a growing range of high quality garments that are fast gaining popular consumer recognition amid a myriad of high profile brand names.

When asked "what is the point of difference between Ritemate Australia - Pilbara Collection and other more well known and longer established brands", we are proud to say that though, Ritemate Australia - Pilbara Collection is 'the new kid on the block', our vast experience and wealth of knowledge within the textile & clothing industry allows us to offer consumers, through selected stockist a range of high quality garments with value for money in our brand. Ritemate Australia - Pilbara Collection is backed up by the three important elements essential to the needs of consumers: "Service, Quality & Price". Our highly reputable parent company was established in 1977 and we would never have been around for that long without recognising the needs of our customers and following through with a service attitude that we believe is second to none"

Styling, fit and fabric performance are key features in the Ritemate Australia - Pilbara Collection range of garments. General Manager, David Mair says "Practical designs, wearing comfort and hard wearing fabrics all combine to give our exciting new brand the acceleration that we are currently experiencing in this broad spectrum market".

The distinctive and iconic Ritemate Australia logo with the hand giving the proverbial 'thumbs up' sign is all about the Aussie larrikin attitude so I guess the accompanying caption says it all:

"IT'S GOTTA BE RITEMATE"





CONTENT

SHIRTS

RMPC008.....	Men's front flap dual pocket, classic fit, long sleeve shirt.....	6
RMPC008S.....	Men's front flap dual pocket, classic fit, short sleeve shirt.....	7
RMPC009.....	Men's front flap dual pocket, classic fit, long sleeve shirt.....	8
RMPC009S.....	Men's front flap dual pocket, classic fit, short sleeve shirt.....	9
RMPC010.....	Men's front flap dual pocket, classic fit, long sleeve shirt.....	10
RMPC010S.....	Men's front flap dual pocket, classic fit, short sleeve shirt.....	11
RMPC011.....	Men's front flap dual pocket, classic fit, long sleeve shirt.....	12
RMPC011S.....	Men's front flap dual pocket, classic fit, short sleeve shirt.....	13
RMPC012.....	Men's single pocket, classic fit, long sleeve shirt.....	14
RMPC013.....	Ladies classic fit, long sleeve shirt.....	16
RM200CF.....	Men's closed front long sleeve shirt.....	20
RM300CF.....	Ladies closed front long sleeve shirt.....	21
RM500BT.....	Men's open front long sleeve shirt.....	22
RM500BTS.....	Men's open front short sleeve shirt.....	23
RM200CFS.....	Men's closed front short sleeve shirt.....	24
RM400CF.....	Children's closed front long sleeve shirt.....	25

PANTS

RMPC014.....	Men's cotton stretch jean mid rise - straight leg - classic fit.....	18
RMPC015.....	Ladies cotton stretch jean mid rise - straight leg - classic fit.....	19
RM106DJ.....	Denim jeans.....	26
RM110SD.....	Stretch denim jeans.....	26
RM220LSD.....	Ladies stretch denim jeans.....	26

FLANNELETTE SHIRTS & VESTS

RM123FCF & RM123QS.....	Closed front flannelette shirt & Open front quilted flannelette shirt.....	28
RM123V & RM123FOF.....	Zip front quilted flannelette vest & Open front flannelette shirt.....	29



Red/Navy/White

RMPC008

Men's front flap dual pocket, classic fit, long sleeve shirt

FEATURES

- Timeless Classic Check Design
- Front Flap Dual Pocket
- Classic Fit Styling
- Adjustable Cuff

SIZE

XS - 5XL

QUALITY

Crafted from 100% High Count, Easy Care Fine Cotton

COLOURS

Available in Red/Navy/White Small Check



RMPC008S

Men's front flap dual pocket, classic fit, short sleeve shirt

FEATURES

- Timeless Classic Check Design
- Front Flap Dual Pocket
- Classic Fit Styling

SIZE

XS - 5XL

QUALITY

Crafted from 100% High Count, Easy Care Fine Cotton

COLOURS

Available in Red/Navy/White Small Check



RMPC009

**Men's front flap dual pocket,
classic fit, long sleeve shirt**

FEATURES

- Timeless Classic Check Design
- Front Flap Dual Pocket
- Classic Fit Styling
- Adjustable Cuff

SIZE

XS - 5XL

QUALITY

Crafted from 100% High Count, Easy Care Fine Cotton

COLOURS

Available in Royal Blue/White Small Check



RMPC009S

**Men's front flap dual pocket,
classic fit, short sleeve shirt**

FEATURES

- Timeless Classic Check Design
- Front Flap Dual Pocket
- Classic Fit Styling

SIZE

XS - 5XL

QUALITY

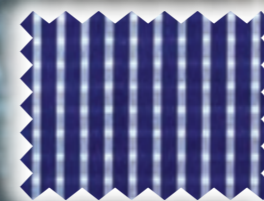
Crafted from 100% High Count, Easy Care Fine Cotton

COLOURS

Available in Royal Blue/White Small Check



PILBARA COLLECTION® EST: 2006



Royal Blue/White

RMPC010

Men's front flap dual pocket, classic fit, long sleeve shirt

FEATURES

- Timeless Classic Stripe Design
- Front Flap Dual Pocket
- Classic Fit Styling
- Adjustable Cuff

SIZE

XS - 5XL

QUALITY

Crafted from 100% High Count, Easy Care Fine Cotton

COLOURS

Available in Royal Blue/White Small Stripe



RMPC010S

Men's front flap dual pocket, classic fit, short sleeve shirt

FEATURES

- Timeless Classic Stripe Design
- Front Flap Dual Pocket
- Classic Fit Styling

SIZE

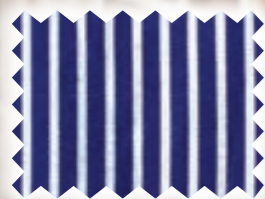
XS - 5XL

QUALITY

Crafted from 100% High Count, Easy Care Fine Cotton

COLOURS

Available in Royal Blue/White Small Stripe



Royal Blue/White



ISO 9001:2008 REGISTERED FIRM

RMPC011

Men's front flap dual pocket, classic fit, long sleeve shirt

FEATURES

- Timeless Classic Check Design
- Front Flap Dual Pocket
- Classic Fit Styling
- Adjustable Cuff

SIZE

XS - 5XL

QUALITY

Crafted from 100% High Count, Easy Care Fine Cotton

COLOURS

Available in Emerald/Navy/White, Red/Navy/White, Safari/Navy/White & Blue/Navy/White Check



RMPC011S

Men's front flap dual pocket, classic fit, short sleeve shirt

FEATURES

- Timeless Classic Check Design
- Front Flap Dual Pocket
- Classic Fit Styling

SIZE

XS - 5XL

QUALITY

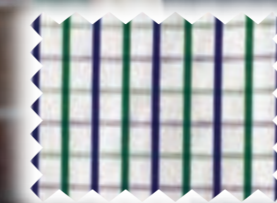
Crafted from 100% High Count, Easy Care Fine Cotton

COLOURS

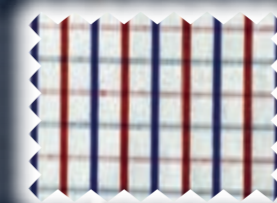
Available in Emerald/Navy/White, Red/Navy/White, Safari/Navy/White & Blue/Navy/White Check



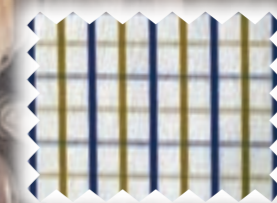
PILBARA COLLECTION® EST: 2006



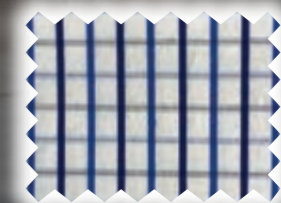
Emerald/Navy/White



Red/Navy/White



Safari/Navy/White



Blue/Navy/White



Men's single pocket, classic fit, long sleeve shirt

FEATURES

- Timeless Classic Stripe Design
- Front Flap Dual Pocket
- Classic Fit Styling
- Adjustable Cuff

SIZE

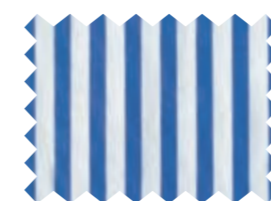
XS - 5XL

QUALITY

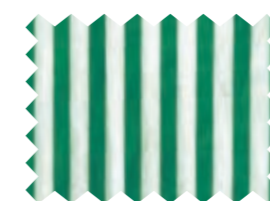
Crafted from 100% High Count, Easy Care Fine Cotton

COLOURS

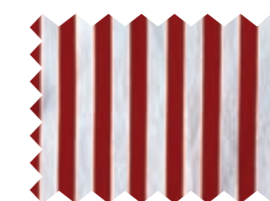
Available in Blue/White, Emerald/White, Red/White Stripes



Blue/White



Emerald/White



Red/White



RMPC013

PILBARA COLLECTION® EST: 2006



Ladies classic fit, long sleeve shirt

FEATURES

- Timeless Classic Stripe Design
- Tapered Classic Fit Styling
- Adjustable Cuff

SIZE

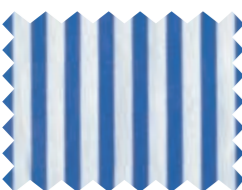
6 - 20

QUALITY

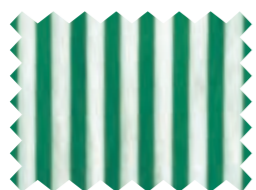
Crafted from 100% High Count, Easy Care Fine Cotton

COLOURS

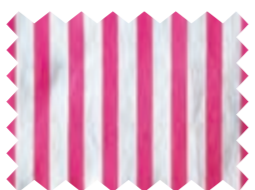
Available in Blue/White, Emerald/White, Pink/White, Purple/White & Red/White Stripes



Blue/White



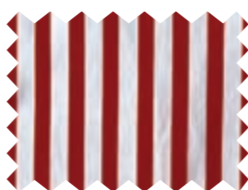
Emerald/White



Pink/White



Purple/White



Red/White



RMPC014

**Men's cotton stretch jean
mid rise - straight leg - classic fit**

FEATURES

- Mid Rise - Straight Leg - Classic Fit
- Comfortable Fit Five Pocket Styling
- All Year Round Weight
- Soft peach finish
- Superior garment assembly, twin needle stitch
- Bar tacks and Rivets for extra strength
- YKK Zip

SIZE

72R - 112R, 87S - 127S, 79L - 94L

QUALITY

Crafted from Premium Quality Cotton Elastane Stretch Twill

COLOURS

Available in Wheat, Bone, Ink & Moss

RMPC015

**Ladies cotton stretch jean
mid rise - straight leg - classic fit**

FEATURES

- Mid Rise - Straight Leg - Classic Fit
- Comfortable Fit Five Pocket Styling
- All Year Round Weight
- Soft peach finish
- Superior garment assembly, twin needle stitch
- Bar tacks and Rivets for extra strength
- YKK Zip

SIZE

6 - 20

QUALITY

Crafted from Premium Quality Cotton Elastane Stretch Twill

COLOURS

Available in Wheat, Bone, Ink & Moss



RM200CF

Men's closed front long sleeve shirt

FEATURES

- Superior garment assembly, twin needle stitching and bar tacks for extra strength
- UPF 50+ meets Australian standard AS/NZS 4399:1996
- Designed for comfort

SIZE

XS - 5XL

WEIGHT

Light weight - 150gsm

QUALITY

Premium quality mercerized, double pre-shrunk, 100% cotton twill

COLOURS

Olive, Ochre, Light Blue, Black, French Navy, Cobalt Blue, Bottle Green, Emerald, Red & Stone



RM300CF

Ladies closed front long sleeve shirt

FEATURES

- Superior garment assembly, twin needle stitching and bar tacks for extra strength
- UPF 50+ meets Australian standard AS/NZS 4399:1996
- Designed for comfort

SIZE

6 - 20

WEIGHT

Light weight - 150gsm

QUALITY

Premium quality mercerized, double pre-shrunk, 100% cotton twill with soft hand feel

COLOURS

Azure, Watermelon, Hot Pink, Purple, French Navy, Cobalt Blue, Bottle Green, Emerald, Red & Stone



RM500BT

Men's open front long sleeve shirt

FEATURES

- Superior garment assembly, twin needle stitching and bar tacks for extra strength
- UPF 50+ meets Australian standard AS/NZS 4399:1996
- Designed for comfort

SIZE

2XS - 5XL

WEIGHT

Light weight - 150gsm

QUALITY

Premium quality mercerized, double pre-shrunk, 100% cotton twill with soft hand feel

COLOURS

Emerald, Light Blue, Black, Red, Cobalt Blue & Stone



RM500BTS

Men's open front short sleeve shirt

FEATURES

- Superior garment assembly, twin needle stitching and bar tacks for extra strength
- UPF 50+ meets Australian standard AS/NZS 4399:1996
- Designed for comfort

SIZE

2XS - 5XL

WEIGHT

Light weight - 150gsm

QUALITY

Premium quality mercerized, double pre-shrunk, 100% cotton twill with soft hand feel

COLOURS

Red, Cobalt Blue & Stone **ONLY**



Emerald



Light Blue



Black



Red



Cobalt Blue



Stone



REGISTERED FIRM

RM200CFS

Men's closed front short sleeve shirt

FEATURES

- Superior garment assembly, twin needle stitching and bar tacks for extra strength
- UPF 50+ meets Australian standard AS/NZS 4399:1996
- Designed for comfort

SIZE

XS - 5XL

WEIGHT

Light weight - 150gsm

QUALITY

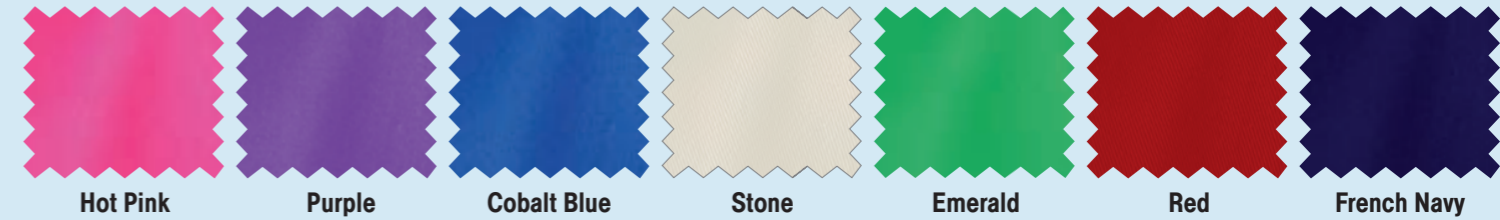
Premium quality mercerized, double pre-shrunk, 100% cotton twill

COLOURS

Cobalt Blue, Red & Stone **ONLY**



PILBARA COLLECTION® EST: 2006



RM400CF

Children's closed front long sleeve shirt

FEATURES

- Superior garment assembly, twin needle stitching and bar tacks for extra strength
- UPF 50+ meets Australian standard AS/NZS 4399:1996
- Designed for comfort

SIZE

0 - 14

WEIGHT

Light weight - 150gsm

QUALITY

Premium quality mercerized, double pre-shrunk, 100% cotton twill

COLOURS

Hot Pink, Purple, Cobalt Blue, Stone, Emerald, Red & French Navy





RM106DJ

Denim jeans

- Mid Rise - Straight Leg - Classic Fit 5 Pocket Styling
- Superior garment assembly, twin needle stitching, rivets and bar tacks for extra strength
- Quality YKK Zippers

SIZE

72R-112R, 87S-127S, 79L-94L

WEIGHT & COLOUR

14.5 OZ indigo stone wash denim

RM110SD

Stretch denim jeans

- Mid Rise - Straight Leg - Classic Fit 5 Pocket Styling
- Superior garment assembly, twin needle stitching, rivets and bar tacks for extra strength
- Quality YKK Zippers

SIZE

72R-112R, 87S-127S, 79L-94L

WEIGHT & COLOUR

13.75 OZ indigo stone wash denim

RM220LSD

Ladies stretch denim jeans

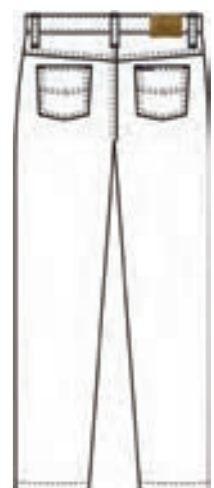
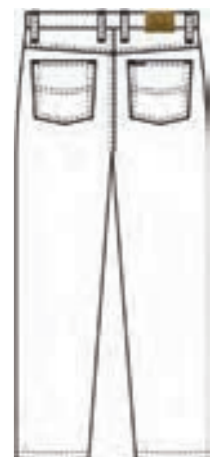
- Mid Rise - Straight Leg - Classic Fit 5 Pocket Styling
- Superior garment assembly, twin needle stitching, rivets and bar tacks for extra strength
- Quality YKK Zippers

SIZE

6 - 24 medium rise fit

WEIGHT & COLOUR

13.75 OZ indigo stone wash denim





RM123FCF

Closed front flannelette shirt

FEATURES

- UPF 50+ meets Australian standard AS/NZS 4399:1996

SIZE

XS - 5XL

WEIGHT

Regular weight - 160gsm

QUALITY

Premium Quality, Preshrunk 100% Cotton Flannelette

COLOURS

Available in assorted Colours

RM123QS

Open front quilted flannelette shirt

FEATURES

- Reinforced riveted metal clips
- UPF 50+ meets Australian standard AS/NZS 4399:1996

SIZE

XS - 5XL

WEIGHT

Regular weight - 160gsm

QUALITY

Premium Quality, Preshrunk 100% Cotton Flannelette

COLOURS

Available in assorted Colours

RM123V

Zip front quilted flannelette vest

FEATURES

- UPF 50+ meets Australian standard AS/NZS 4399:1996

SIZE

XS - 5XL

WEIGHT

Regular weight - 160gsm

QUALITY

Premium Quality, Preshrunk 100% Cotton Flannelette

COLOURS

Available in assorted Colours

RM123FOF

Open front flannelette shirt

FEATURES

- UPF 50+ meets Australian standard AS/NZS 4399:1996

SIZE

XS - 10XL

WEIGHT

Regular weight - 160gsm

QUALITY

Premium Quality, Preshrunk 100% Cotton Flannelette

COLOURS

Available in assorted Colours



SIZE CHARTS

MEN'S JEANS

SIZES WAIST CM	REGULAR SIZES										STOUT SIZES						LONG SIZES						
	72R	77R	82R	87R	92R	97R	102R	107R	112R	117R	87S	92S	97S	102S	107S	112S	117S	122S	127S	79L	84L	89L	94L
	72	77	82	87	92	97	102	107	112	117	87	92	97	102	107	112	117	122	127	79	84	89	94

LADIES JEANS

SIZES WAIST CM	REGULAR SIZES									
	6	8	10	12	14	16	18	20	22	24
	68	73	78	83	88	93	98	103	108	113

MENS SHIRTS, VEST & JACKETS

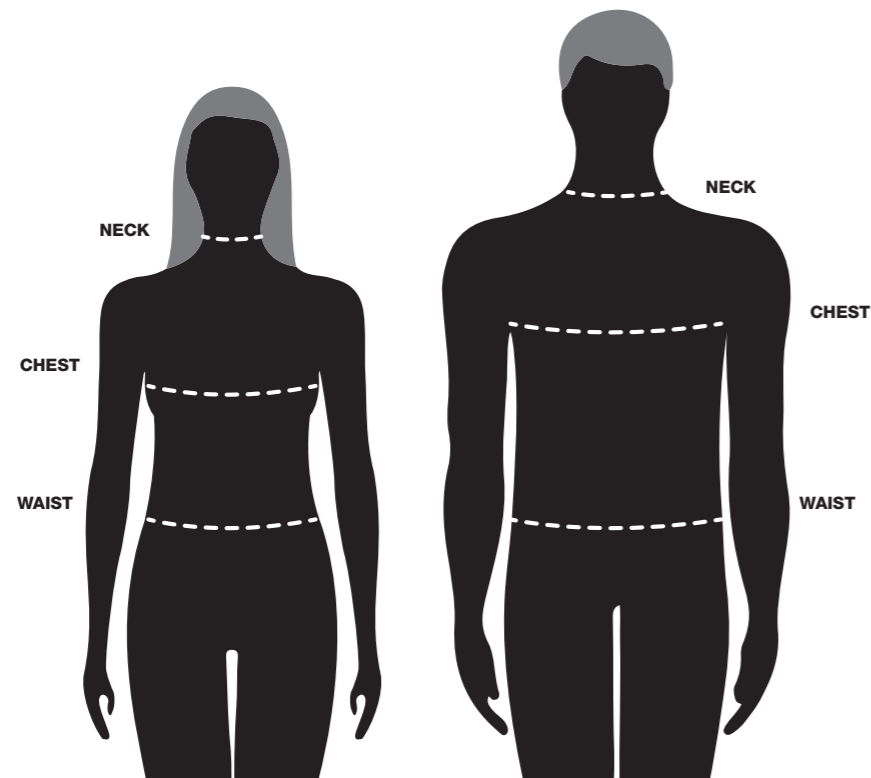
SIZES RELAXED CHEST NECK CM	REGULAR SIZES									
	2XS	XS	S	M	L	XL	2XL	3XL	4XL	5XL
	92	96	100	106	114	122	132	140	148	154
	32/33	34/35	36/37	38/39	41/42	43/44	45/46	48/49	50/51	52/53

LADIES SHIRTS

SIZES RELAXED CHEST NECK CM	REGULAR SIZES							
	6	8	10	12	14	16	18	20
	85	90	96	102	107	114	122	130
	37	38	39	40	41	42	43	44

KIDS SHIRTS

SIZES RELAXED CHEST	REGULAR SIZES							
	0	1-2	3-4	5-6	7-8	9-10	11-12	13-14
	58	63	68	74	80	85	92	98



For a comfortable fit it is important to measure correctly.
When measuring make sure the tape is level and not tight.

- NECK** Measure around the neck where the top of the shirt collar would sit – Leaving room for comfort
- CHEST** Standing naturally, measure around the fullest part of the chest and shoulder blades measuring under the arms
- WAIST** Measure over undergarments around your natural waistline

NOTES



www.ritemate.com.au